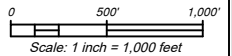


USGS 7.5' Quadrangle: Paris West, KY
 SITE: Latitude 38°13'09.6"N
 Longitude 84°16'30.1"W

Universal Transverse Mercator (UTM)
 North American Datum of 1983 (NAD83)

Contour Interval 10 FEET
 North American Vertical Datum of 1988 (NAVD88)



880 LENNOX COURT
 ZIONSVILLE, INDIANA 46077

LEGEND

 SITE BOUNDARY

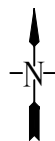
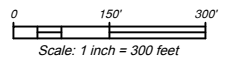
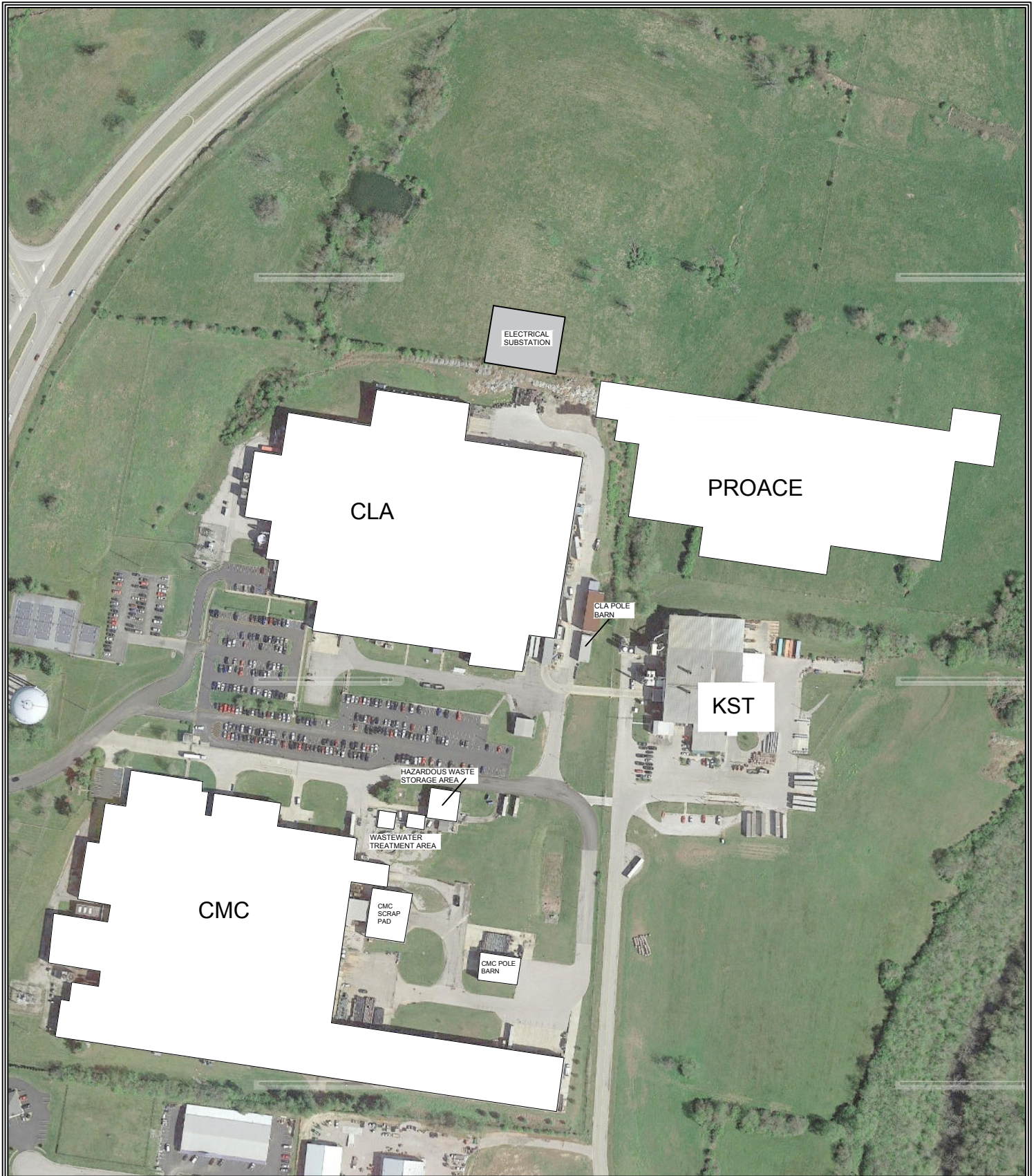


Figure 1 - Site Location Map	
COMPANY: Central Motor Wheel of America	
ADDRESS: 125 Wheat Drive	
CITY: Paris	STATE: IN
COUNTY: Bourbon	REV: 1.0
DATE: 08/30/2020	ACCT#: 4668



Cornerstone
 ENVIRONMENTAL HEALTH AND SAFETY, INC.
ISO 9001:2015 REGISTERED QUALITY SYSTEM

880 LENNOX COURT
 ZIONSVILLE, INDIANA 46077

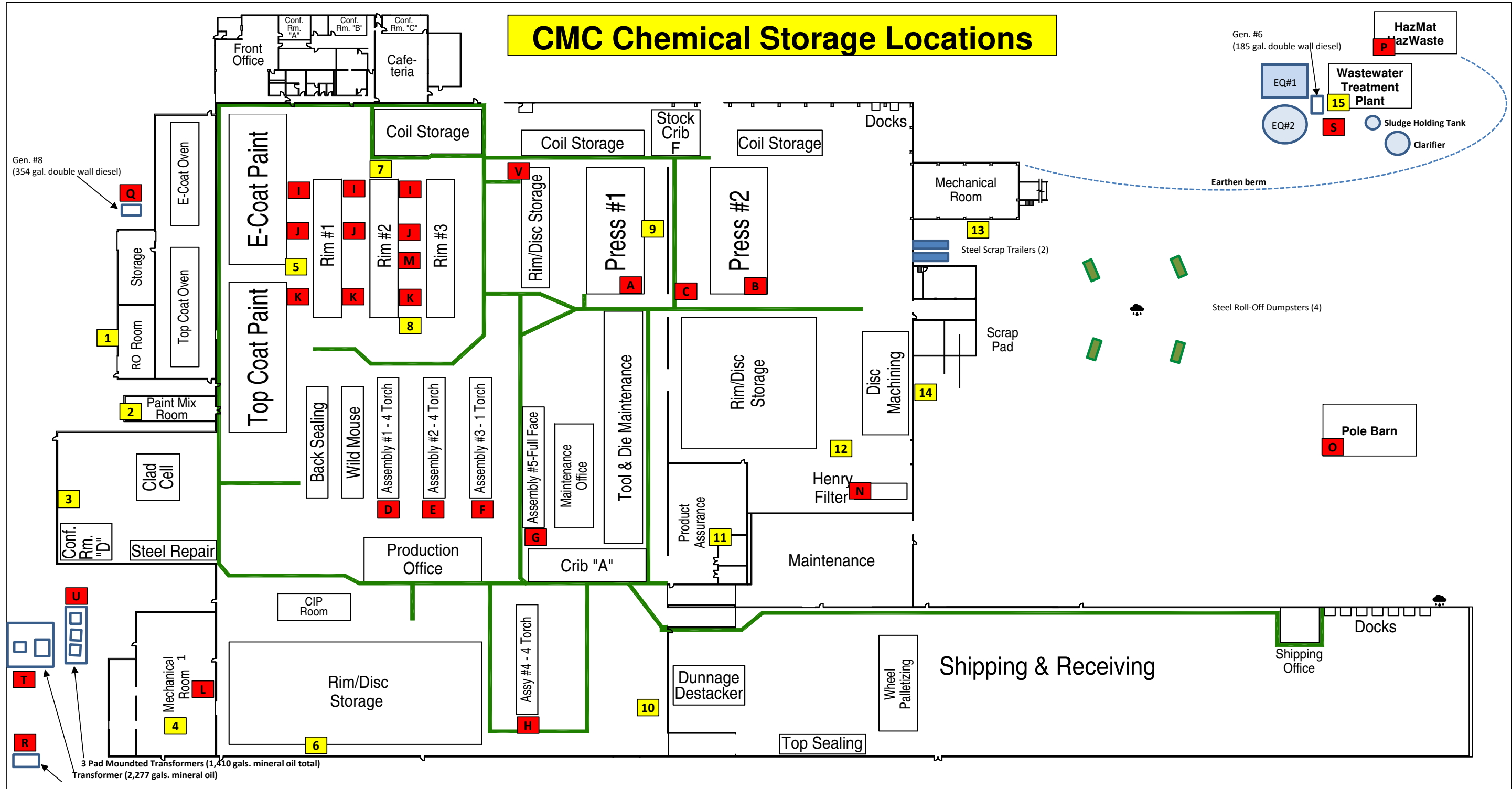
LEGEND

→ STORMWATER FLOW
 ■ STORM DRAIN

N

Figure # 2 - General Location Map

COMPANY: Central Motor Wheel of America, Inc.	
ADDRESS: 125 Wheat Drive	
CITY: Paris	STATE: KY
COUNTY: Bourbon	REV: 1.0
DATE: 08/31/2020	ACCT#: 4668



NOTES:

- 1. HazWaste & Scrap Pads are concrete with vinyl liners.
- 2. Storm Sewer Inlet.

See "CMC Chemicals" tab for chemical location, container, and maximum inventory.

See "Chemicals in Equip. Loc." tab for chemicals contained in equipment.

CMC LAYOUT	
 Central Motor Wheel of America dba CMWA 125 Wheat Dr. Paris, Ky 40361	
Scale: NTS	Figure
Date: 08/27/2020	3
Prepared by: REB	

CMC Chemical Maximum Inventories

1 RO Room					
Supplier	Chemical	Container	Max. Inventory	UoM	SPCC Storage Capacity
Avista	RO Quest 4000	5 GP	10	Gals.	0
BgrassK	Kesco 50	55 GPD	110	Gals.	110
BgrassK	Kesco Dechlor 10	55 GPD	110	Gals.	110

2 Paint Mix Room					
Supplier	Chemical	Container	Max. Inventory	UoM	SPCC Storage Capacity
Brenntag	Acetone	55 GSD	55	Gals.	55
PPG	BA Reducer	55 GSD	110	Gals.	110
PPG	NA 101	55 GSD	110	Gals.	110
PPG	Various Paints	55 GSD	275	Gals.	275
Superior Chemicals	Recycle Solvent	55 GSD	220	Gals.	220
	Hazardous Waste	55 GSD	55	Gals.	55

3 Chemical Storage Area					
Supplier	Chemical	Container	Max. Inventory	UoM	SPCC Storage Capacity
BgrassK	KC 323M	55 GPD	110	Gals.	110
BgrassK	KD110	55 GPD	110	Gals.	110
BgrassK	KL 609S	55 GPD	165	Gals.	165
BgrassK	KL-615	55 GPD	165	Gals.	165
Brenntag	Hydrochloric Acid	55 GPD	110	Gals.	110
CMG	Solar Salt	2520 PP	7,560	Lbs.	0
Electrodes Inc.	Evolouition Di-Electric	55 GPD	55	Gals.	55
DuBois	Dubois OH-25 (Liquid Caustic Soda 25%)	55 GPD	440	Gals.	440
Houghton	Hocut B207	55 GSD	165	Gals.	165
Houghton	Hocut 787	326 GT	978	Gals.	978
Master	Trim HD	55 GSD	220	Gals.	220
Mitco	Additive 3642 Corrosion Inhibitor	55 GPD	495	Gals.	495
OmniSource Integrated Supply, LLC	Omni Coat Grease	5 GP	25	Gals.	0
PPG	Chemfill Buffer	55 GPD	55	Gals.	55
PPG	Chemfos 700 RW	250 GT	1,000	Gals.	1,000
PPG	Chemfos Liquid Additive (CFLA)	55 GPD	275	Gals.	275
PPG	Chemklean 611L	270 GT	540	Gals.	540
PPG	Chemseal 59	55 GPD	110	Gals.	110
PPG	ED Additive SA	5 GP	10	Gals.	0
PPG	Heat Exchanger Cleaner	5 GP	10	Gals.	0
PPG	Rinse Conditioner	100 PFD	400	Lbs.	0

4 Mechanical Room 1					
Supplier	Chemical	Container	Max. Inventory	UoM	SPCC Storage Capacity
BgrassK	KC 323M	30 GPD	30	Gals.	0
BgrassK	KD 110	30 GPD	30	Gals.	0
BgrassK	KL609S	5 GP	5	Gals.	0
BgrassK	Sodium hypochloride	30 GPD	30	Gals.	0
CMG	Solar Salt	2520 PP	2,520	Lbs.	0

5 Steel Pretreat & E-Coat					
Supplier	Chemical	Container	Max. Inventory	UoM	SPCC Storage Capacity
JonesHamilton	Hydrochloric Acid	55 GPD	55	Gals.	55
Mitco	Additive 3642 Corrosion Inhibitor	55 GPD	55	Gals.	55
PPG	Powercron Additive CA-682	55 GPD	55	Gals.	55
PPG	Powercron Additive CA-709	55 GPD	55	Gals.	55
PPG	CF 665-415	55 GPD	55	Gals.	55
PPG	Chemfos 700 RW	250 GT	250	Gals.	250
PPG	Chemfos Liquid Additive	55 GPD	55	Gals.	55
PPG	Chemklean 611L	270 GT	270	Gals.	270
PPG	Chemseal 59	55 GPD	55	Gals.	55
PPG	MZD 7330	55 GPD	55	Gals.	55
PPG	Rinse Conditioner GL(RCGL)	100 PFD	100	Lbs.	0
Ulrich	Muratic Acid	55 GPD	55	Gals.	55

6 Nozzle Room					
Supplier	Chemical	Container	Max. Inventory	UoM	SPCC Storage Capacity
Brenntag	Hydrochloric Acid 20%	110 GT	110	Gals.	110
Calvary	Cal Clean 535	55 GPD	165	Gals.	165
Dubois	Dubois OH-25 (Liquid Caustic Soda 25%)	110 GT	110	Gals.	110

7 Rim Lines					
Supplier	Chemical	Container	Max. Inventory	UoM	SPCC Storage Capacity
Houghton	Additive 3561	55 GPD	55	Gals.	55
Houghton	Hocut 787	275 GT	275	Gals.	275
Houghton	Hocut B-207	55 GSD	55	Gals.	55
Mitco	Additive 3642	55 GPD	55	Gals.	55

8 Leak Test					
Supplier	Chemical	Container	Max. Inventory	UoM	SPCC Storage Capacity
Airgas	Compressed Helium				0

9 Press Area					
Supplier	Chemical	Container	Max. Inventory	UoM	SPCC Storage Capacity
Master	Trim HD	55 GPD	110	Gals.	110
Master	Trim TC 220	55 GPD	110	Gals.	110

10 Lube Room					
Supplier	Chemical	Container	Max. Inventory	UoM	SPCC Storage Capacity
Castrol	Castrol Series 1	55 GSD	55	Gals.	55
Lincoln Electric	Super Arc L-56	1,000 PB	48,000	Lbs.	0
Mobil	Vacuoline 140S 150 VG-32	55 GSD	55	Gals.	55
Petro-Canada	Accufflo TK 68	2-55 GSD & 2-70 GTK	250	Gals.	250
Petro-Canada	Accufflo TK 220	55 GSD	55	Gals.	55
Petro-Canada	Enduratex EP 150	70 GTK	70	Gals.	70
Petro-Canada	Synduro SHB 46	55 GSD	110	Gals.	110
Petro-Canada	Synduro SHB 68	2-55 GSD & 1-70 GTK	180	Gals.	180
Petro-Canada	Turboflo R&O 32	1-55 GSD & 1-70 GTK	125	Gals.	125

11 CMC Q.A. Area					
Supplier	Chemical	Container	Max. Inventory	UoM	SPCC Storage Capacity
Fischer	Sulfuric Acid Solution	1 GJ	1	Gals.	0

CMC Chemical Maximum Inventories

12 Disc Macining					
Supplier	Chemical	Container	Max. Inventory	UoM	SPCC Storage Capacity
Calvary	Gal Clean 535	55 GPD	55	Gals.	55
Master	CB2025	140 GDT	140	Gals.	140
Master	Trim TC 175	55 GSD	55	Gals.	55
Master	Trim TC 211	55 GSD	55	Gals.	55
Master	Trim TC 220	55 GPD	55	Gals.	55

13 Cylinder storage					
Supplier	Chemical	Container	Max. Inventory	UoM	SPCC Storage Capacity
Airgas	Acetylene	250 CF/CY	1,000	CF	0
Airgas	Argon	250 CF/CY	500	CF	0
Airgas	Argon 75% CO2 25%	250 CF/CY	500	CF	0
Airgas	Oxygen	250 CF/CY	1,000	CF	0
Airgas	Helium	3-250 CF/CY & 2-12CYU	6,750	CF	0

14 Bulk Gas Tanks					
Supplier	Chemical	Container	Max. Inventory	UoM	SPCC Storage Capacity
Praxair	Liquid Argon	236,145 CFTk	236,145	CF	0
Airgas	Carbon Dioxide	244,794 CFTk	244,794	CF	0

15 Waste Treatment					
Supplier	Chemical	Container	Max. Inventory	UoM	SPCC Storage Capacity
DuBois	Dubois OH-25 (Liquid Caustic Soda 25%)	55 GPD	110	Gals.	110
Mitco	Mitflo 551	55 GPD	385	Gals.	385
Mitco	Mitflo 5799L	55 GPD	220	Gals.	220
Mitco	Mitflo 5880L	55 GPD	220	Gals.	220
Mitco	Mitflo 7983L	55 GPD	55	Gals.	55
	Hazardous Waste	55 GPD	825	Gals.	825

GRAND TOTAL SPCC STORAGE CAPACITY

11,173

Acronyms 12CYU - 12 Cylinder Unit
 CF - Cubic Foot
 CF/CY - Cubic Feet / Cylinder
 CFTk - Cubic Foot Tank
 Gals. - Gallons
 GJ - Gallon Jug
 GP - Gallon Pail
 GPD - Gallon Plastic Drum
 GSD - Gallon Steel Drum
 GT - Gallon Tote
 GTk - Gallon Tank
 Lbs. - Pounds
 PG - Pound Box
 PFD - Pounds Fiber Drum
 PP - Pounds Pallet

Chemicals in Equipment Locations

Stamping Presses

		SPCC Storage Capacity
A	Press #1 - 556 gals. AW 68 Oil (Total).	556
B	Press #2 - 581 gals. AW 68 Oil (Total).	581
C	Two 275 gal. used AW 68 Oil totes.	550

5 Assembly Line Units

D	Line 31 - 771 gals. AW 68 Oil (Total)	771
E	Line 32 - 510 gals. AW 68 Oil (Total)	510
F	Line 33 - 435 gals. AW 68 Oil (Total)	435
G	Line 35 - 737 gals. AW 68 Oil (Total)	737
H	Line 36 - 65 gals. AW 68 Oil (Total)	65

3 Rim Line Units

I	1,000 gals. cutting fluid per unit.	3,000
J	500 gal. oil/water separator per unit.	1,500
K	Two 275 gal. used AW 68 Oil totes.	550

#1 Mechanical Room

L	7 air compressors 55 gals. oil each unit.	385
----------	---	-----

Henry Filters

M	2,000 gal. Rim Henry Filter Pit.	2,000
N	17,000 gal. Disc Machining Henry Filter Pit.	17,000

Pole Barn

O	Spare transformer with 1,410 gals. mineral oil.	1,410
----------	---	-------

HazMat / HazWaste Pad Max. Inv.

P	Drums 55 gals.	4,400
	Tanks 1,500.	4,500
	Totes \leq 326.	3,260

Generators

Q	Generator #8 Double Walled Diesel Tank	354
R	Generator #2 Double Walled Diesel Tank	300
S	Generator #6 Double Walled Diesel Tank	185

Transformers

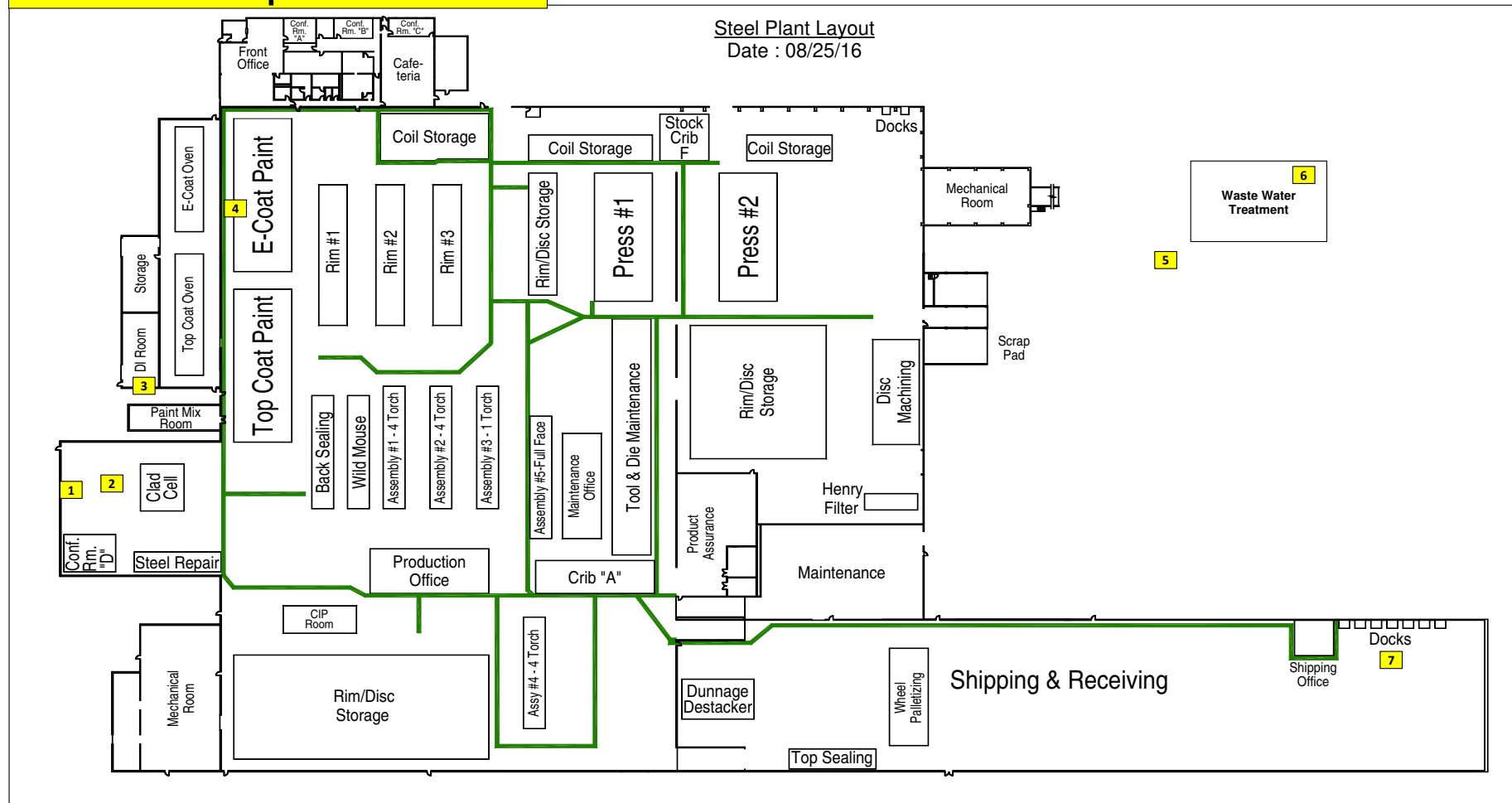
T	Transformer	2,277
U	3 Pad Mounded Transformers	4,230

Bulk Tanks

V	1,000 Plastic Tank - AW 68 Oil	1,000
----------	--------------------------------	-------

Grand Total Chemicals in Equipment	50,556
Grand Total Chemical Max. Inv.	11,173
Grand Total SPCC Storage Capacity	61,729

CMC Division Spill Kit Locations



Spill Kit Contents

Inventory as of 09/30/19

- 1** **Chemical Storage Spill Cabinet**
- Aprons
 - Boots
 - Chemical Absorbent Pads
 - Disposable Spill Bags
 - Face Shields
 - Gloves
 - Goggles
 - Haz Mat Absorbent Socs
 - Large Chemical Spill Pillow
 - Oil Absorbent
 - Protective Suits
 - Respirator
 - Respirator Cartridges

- 2** **Chemical Storage Spill Drum**
- Absorbent Pads
 - Chemical Absorbent Pillows
 - Disposable Bags
 - Gloves
 - Goggles
 - Oil Absorbent
 - Respirator

- 3** **DI Room Spill Kit**
- 55 Gallon Drum of Lime
 - Aprons
 - Boots
 - Chemical Absorbent Pads
 - Disposable Spill Bags
 - Face Shields
 - Gloves
 - Goggles
 - Haz Mat Absorbent Socs
 - Large Chemical Spill Pillow
 - Pig Acid and Base Spill Pillow
 - Protective Suits
 - Respirator
 - Respirator Cartridges

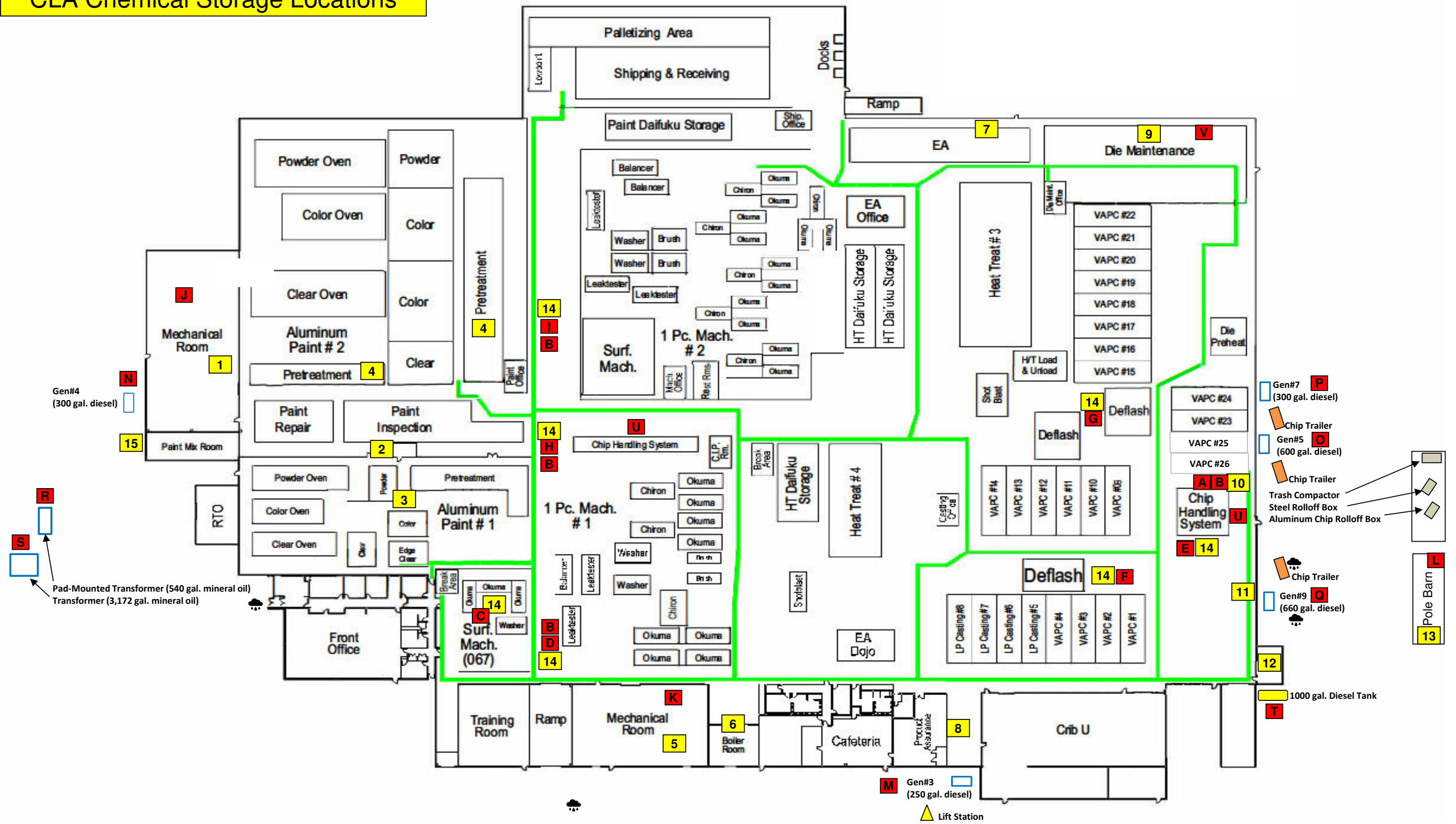
- 4** **E-Coat Spill Cabinet**
- Aprons
 - Boots
 - Chemical Absorbent Pads
 - Disposable Bags
 - Drum Repair Kit
 - Drum Tourniquet
 - Face Shield
 - Goggles
 - Oil Absorbent Pads
 - Pigalog Haz-mat pulp
 - Protective Suits
 - Respirator
 - Respirator Cartridges

- 5** **Waste Water Treatment Outside Storage Building**
- Absorbent Socs
 - Brooms
 - Instrazorb - Liquid Absorbent
 - Shovels

- 6** **Waste Water Treatment Spill Cabinet**
- Aprons
 - Chemical Absorbent Socs
 - Face Shield
 - Gloves
 - Goggles
 - Oil Absorbent Socs
 - Pigalog Haz Mat Pulp
 - Protective Suits
 - Respirator
 - Respirator Cartridges
 - Sheet Plastic
 - Shovels

- 7** **Shipping/Receiving Spill Drums**
- Boots
 - Disposable Bags
 - Gloves
 - Goggles
 - Hazardous Absorbents
 - Oil Absorbent Socs
 - Oil Absorbents Pads
 - Protective Suits
 - Respirator
 - Respirator Cartridges

CLA Chemical Storage Locations



- NOTES:**
- HazWaste & Scrap Pads are concrete with vinyl liners.
 - ☛ Storm Sewer Inlet.

See "CMC Chemicals" tab for chemical location, container, and maximum inventory.

See "Chemicals in Equip. Loc." tab for chemicals contained in equipment.

CLA LAYOUT

CMWA
Central Motor Wheel of America
dba CMWA
125 Wheat Dr.
Paris, Ky 40361

Scale: NTS	Figure 4
Date: 08/27/2020	
Prepared by: REB	

CLA Chemical Maximum Inventories

1 Mechanical Room #2						
Supplier	Chemical	Container	Max. Inventory	UoM	SPCC Storage Capacity	
BgrassKesco	15	5 GP	10	Gals.	0	
BgrassKesco	KC 323M	30 GPD	120	Gals.	0	
BgrassKesco	KD 110	30 GPD	120	Gals.	0	
BgrassKesco	Sodium Hypochlorite	30 GPD	210	Gals.	0	
Cargill	Bright & Soft Salt Pellet	2520 PP	2,520	Lbs.	0	
	Hazardous Waste (outside mech.room)	55 GSD	110	Gal.	110	

2 Vacuum Room						
Supplier	Chemical	Container	Max. Inventory	UoM	SPCC Storage Capacity	
Dubois	Dubois OH-25 (Liquid Caustic Soda 25%)	55 GPD	55	Gals.	55	

3 067 Paint and Pretreatment						
Supplier	Chemical	Container	Max. Inventory	UoM	SPCC Storage Capacity	
Henkel	Palcoat E4610 R2	55 GPD	55	Gals.	55	
Henkel	Prepalene 5552A	55 GPD	55	Gals.	55	
Henkel	Ridoline 412	330 GT	330	Gals.	330	

4 068 Pretreatment Line #1						
Supplier	Chemical	Container	Max. Inventory	UoM	SPCC Storage Capacity	
Dubois	Liquid Caustic Soda 25%	55 GPD	55	Gals.	55	
Henkel	Boneerite M-AD 700	55 GPD	55	Gals.	55	
Henkel	PaleCoat 4610 R2	55 GPD	55	Gals.	55	
Henkel	Prepalene 5552A	55 GPD	55	Gals.	55	
Henkel	Prepalene 5552B	55 GPD	55	Gals.	55	
Henkel	Ridoline 412	330 GT	330	Gals.	330	

068 Pretreatment Line #2						
Supplier	Chemical	Container	Max. Inventory	UoM	SPCC Storage Capacity	
Bonderite	C-AK 412	330 GT	330	Gals.	330	
Henkel	Palcoat E4610 R2	55 GPD	55	Gals.	55	
Henkel	Prepalene 5552A	55 GPD	55	Gals.	55	

5 Mechanical Room #1						
Supplier	Chemical	Container	Max. Inventory	UoM	SPCC Storage Capacity	
Avista	RO Quest 4000	55 GTK	55	Gals.	55	
BgrassKesco	50	55 GTK	55	Gals.	55	
BgrassKesco	Dechlor 10	55 GTK	55	Gals.	55	
BgrassKesco	KC 323M	30 GPD	30	Gals.	0	
BgrassKesco	KD 110	30 GPD	30	Gals.	0	
BgrassKesco	Sodium Hypochlorite	30 GPD	30	Gals.	0	
Cargill	Bright & Soft Salt Pellets	2520 PP	7,560	Lbs.	0	

6 Boiler Room						
Supplier	Chemical	Container	Max. Inventory	UoM	SPCC Storage Capacity	
Avista	RO Quest 4000	5 GP	10	Gals.	0	
BgrassKesco	50	30 GPD	60	Gals.	0	
BgrassKesco	KL-615	30 GPD	90	Gals.	0	
BgrassKesco	Dechlor 10	30 GPD	30	Gals.	0	
BgrassKesco	KB-33c	200 PPD	600	Lbs.	0	
BgrassKesco	KB-540	30 GPD	30	Gals.	0	
BgrassKesco	KB-710	30 GPD	90	Gals.	0	
BgrassKesco	KL-617	5 GP	10	Gals.	0	
Cargill	Bright & Soft Salt Pellets	2520 PP	2,520	Lbs.	0	

7 Cooling Water Pit #3						
Supplier	Chemical	Container	Max. Inventory	UoM	SPCC Storage Capacity	
BgrassKesco	KC 323M	30 GPD	30	Gals.	0	
BgrassKesco	KD 110	30 GPD	30	Gals.	0	
BgrassKesco	Sodium Hypochlorite	30 GPD	30	Gals.	0	
BgrassKesco	KL-617	5 GP	5	Gals.	0	

8 Floor Cleaner Storage						
Supplier	Chemical	Container	Max. Inventory	UoM	SPCC Storage Capacity	
Lynx	D-Plus 2 Floor Cleaner	250 GTK	250	Gals.	250	
Lynx	D-Plus 2 Floor Cleaner Delution Tank	110 GTK	110	Gals.	110	

9 Die Assurance						
Supplier	Chemical	Container	Max. Inventory	UoM	SPCC Storage Capacity	
Brentag	Citric Acid (drum)	55 GPD	55	Gals.	55	
Dubois	Dubois OH-25 (Liquid Caustic Soda 25%)	55 GPD	55	Gals.	55	
Henkel	Oil Dag	5 GP	20	Gals.	0	
Hill & Griffith	Concote R200	5 GP	20	Gals.	0	

10 Bulk Coolant						
Supplier	Chemical	Container	Max. Inventory	UoM	SPCC Storage Capacity	
MasterChem.	CB2025	8,000 GTK	8,000	Gals.	8,000	
MasterChem.	CB2025	275 GT	550	Gals.	550	

11 Gas Cylinder Storage						
-------------------------	--	--	--	--	--	--

CLA Chemical Maximum Inventories

Supplier	Chemical	Container	Max. Inventory	UoM	SPCC Storage Capacity
Airgas	Bulk Argon supply Tanks (outside)	292,370 CFTk	292,370	CF	0
Airgas	Compressed 75% Argon 25% nit	250 CF/CY	1,000	CF	0
Airgas	Compressed Acetylene	250 CF/CY	250	CF	0
Airgas	Compressed Argon	250 CF/CY	1,000	CF	0
Airgas	Compressed Nitrogen	250 CF/CY	500	CF	0
Airgas	Compressed NOS	250 CF/CY	250	CF	0
Airgas	Compressed Oxygen	250 CF/CY	2,000	CF	0
Airgas	Compressed Oxygen	310 Lb./CY	620	Lbs.	0

12 Machinery Lubrication Control Room

Supplier	Chemical	Container	Max. Inventory	UoM	SPCC Storage Capacity
Atlas Machine and Supply	AM-1046	55 GSD	220	Gals.	220
Conoco	Hyd AW 68	275 GT	275	Gals.	275
Hill & Griffith	Aquatech FR-200	55 GPD	330	Gals.	330
Houghton	Cosmoubric B-230	335 GT	335	Gals.	335
PetroCanada	220 Multi-Way Machine Lube	240 GPT	240	Gals.	240
PetroCanada	Various Lubricants	5 GP	200	Gals.	0

13 Chemical Storage Building (Pole Barn)

Supplier	Chemical	Container	Max. Inventory	UoM	SPCC Storage Capacity
Cargill	Bright & Soft Salt Pellets	2520 PP	10,080	Lbs.	0
Dubois	Dubois OH-25 (Liquid Caustic Soda 25%)	55 GPD	440	Gals.	440
Henkel	Bonderite M-AD 700	55 GPD	55	Gals.	55
Henkel	Palcoat 4610 R2	55 GPD	495	Gals.	495
Henkel	Palecoat E4610 MA	55 GPD	165	Gals.	165
Henkel	Prepalene 5552A	55 GPD	495	Gals.	495
Henkel	Prepalene 5552B	55 GPD	165	Gals.	165
Henkel	Ridoline 412	326 GT	1,304	Gals.	1,304
MasterChem.	Cool PAK ALW	270 GT	1,080	Gals.	1,080
MasterChem.	Trim TC 211	55 GPD	110	Gals.	110
MasterChem.	Trim TC 220	55 GPD	110	Gals.	110
MasterChem.	Trim TC 220 NC	55 GPD	110	Gals.	110
MasterChem.	Trim TC 239	5 GP	20	Gals.	0
MasterChem.	Trim Whamex	275 GT	275	Gals.	275
Rohm & Hass	Kathon 886	1 GJ	4	Gals.	0
	Nitric Acid	55 GSSD	55	Gals.	55
	Hydrogen Peroxide	55 GPD	55	Gals.	55
	Clean AMO	55 GPD	110	Gals.	110

14 Henry Filters

Supplier	Chemical	Container	Max. Inventory	UoM	SPCC Storage Capacity
MasterChem.	Coolpak ALW (067 & 068)	275 GT	550	Gals.	550
MasterChem.	CB2025 (073, 076, 083 #1, 083 #2, & 085)	270 GT	1,350	Gals.	1,350
MasterChem.	Trim TC 211	55 GPD	55	Gals.	55

15 Paint Mix Room

Supplier	Chemical	Container	Max. Inventory	UoM	SPCC Storage Capacity
Tiger	Drylac 200	250 Lb. FD	7,500	Lbs.	0
	HazWaste	55 GSD	55	Gals.	55
PPG	Various Solvents	55 GSD	440	Gals.	440
PPG	Various Paints	55 GSD	1,100	Gals.	1,100

GRAND TOTAL SPCC STORAGE CAPACITY

20,809

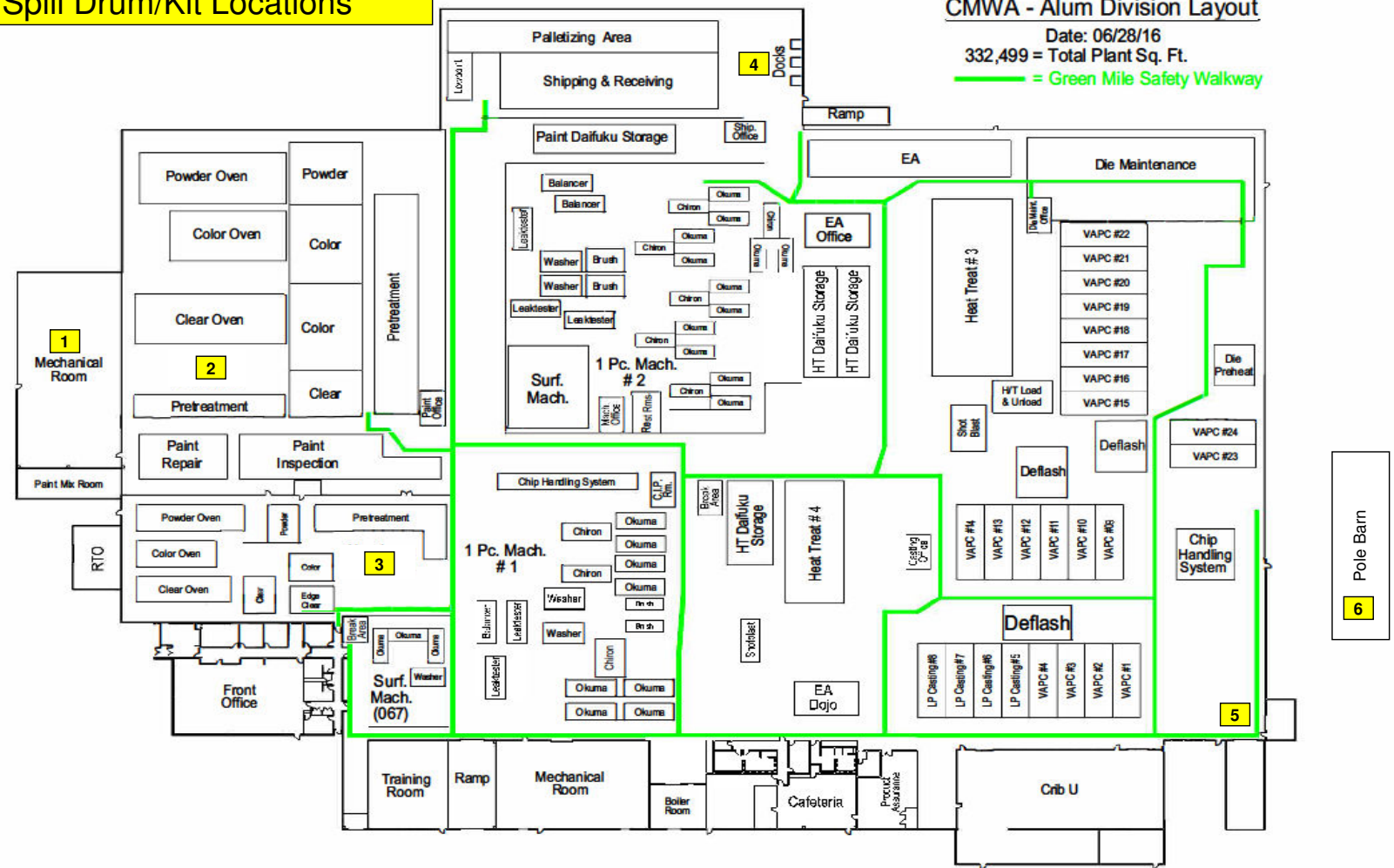
Acronyms 12CYU - 12 Cylinder Unit

CF - Cubic Foot
 CF/CY - Cubic Feet / Cylinder
 CFTk - Cubic Foot Tank
 Gals. - Gallons
 GJ - Gallon Jug
 GP - Gallon Pail
 GPD - Gallon Plastic Drum
 GSD - Gallon Steel Drum
 GSSD - Gallon Stainless Steel Drum
 GT - Gallon Tote
 GTk - Gallon Tank
 GDWTK - Gallon Double Walled Tank
 Lbs. - Pounds
 PFD - Pounds Fiber Drum
 PP - Pounds Pallet
 PPD - Pounds Plastic Drum

CLA Equipment Chemical Locations

Bulk Coolant	SPCC Storage Capacity
A 8,000 gal. tank.	8,000
B Coolant totes	550
Henry Filters	
C #1 Henry Filter Pit & Deck (067) - 4,500 gals.	4,500
D #2 Henry Filter Pit & Deck (083 #1) - 6,000 gals.	6,000
E #3 Henry Filter Pit & Deck (073) - 2,500 gals.	2,500
F #4 Henry Filter Pit & Deck (083 #2) - 6,000 gals.	6,000
G #5 Henry Filter Pit & Deck (076) - 5,000 gals.	5,000
H #6 Henry Filter Pit & Deck (085) - 18,000 gals.	18,000
I #7 Henry Filter Pit & Deck (068) - 4,500 gals.	4,500
#1 Mechanical Room	
J 1 air compressors 55 gals. oil each unit.	55
#2 Mechanical Room	
K 3 air compressors 55 gals. oil each unit.	165
Pole Barn	
L 3,500 gals. used oil tank.	3,500
Generators	
M Generator #3 Single Walled Diesel Tank	250
N Generator #4 Double Walled Diesel Tank	300
O Generator #5 Double Walled Diesel Tank	600
P Generator #7 Double Walled Diesel Tank	300
Q Generator #9 Double Walled Diesel Tank	660
Transformers	
R Pad-Mounted Transformer	540
S Transformer	3,172
Diesel Storage Tank	
T 1,000 Gallon Double Walled Tank	1,000
Used Coolant	
U Used Coolant 275 GT (3-083 #1 and 2-Casting)	1,375
Die Assurance	
V 220 Gallon Stainless Steel Caustic Soda Tank	220
Grand Total Chemicals in Equipment	67,187
Grand Total Chemical Max. Inv.	20,809
Grand Total SPCC Storage Capacity	87,996

CLA Spill Drum/Kit Locations



CMWA - Alum Division Layout
 Date: 06/28/16
 332,499 = Total Plant Sq. Ft.
 = Green Mile Safety Walkway

Spill Kit Contents

Inventory as of 09/30/19

- 1 Mech. Room #2 Spill Kit**
- Aprons
 - Chemical Absorbent Pads
 - Chemical Absorbent Socs
 - Disposable Bags
 - Drum of Socs
 - Face Shield
 - Goggles
 - Haz. Mat Pulp
 - Respirator
 - Respirator Cartridges
 - Shovel
 - Suits

- 2 068 Paint Line Spill Drum**
- 2004 Emergency Response Book
 - Absorbent Pads
 - Absorbent Pillows
 - Absorbent Socs
 - Gloves
 - Goggles
 - Suit

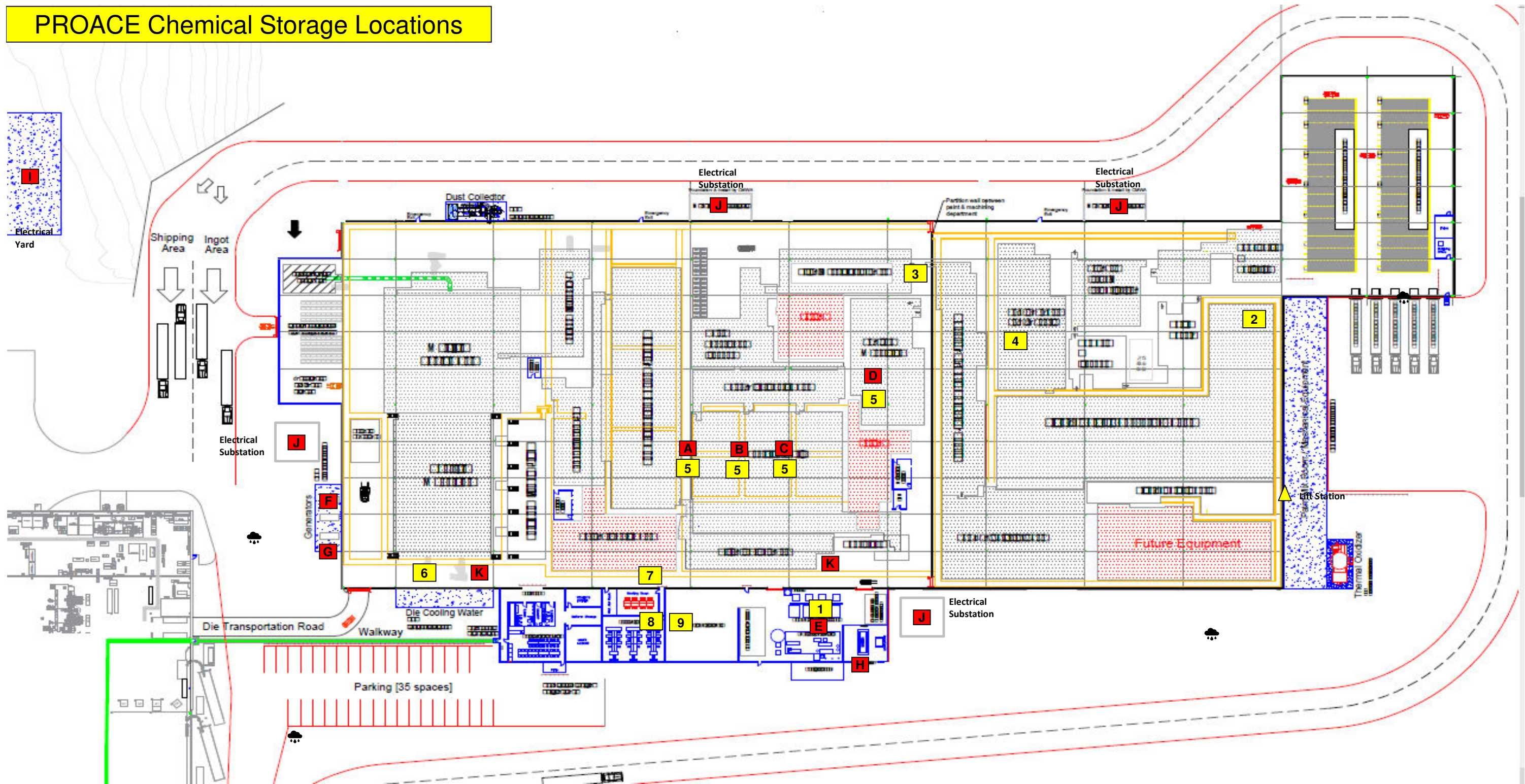
- 3 067 Paint Line Spill Drum**
- 2004 Emergency Response Book
 - Absorbent Pads
 - Absorbent Pillows
 - Absorbent Socs
 - Gloves
 - Goggles
 - Suit

- 4 Shipping Dock Spill Kit**
- 2004 Emergency Response Book
 - Chemical Absorbent Pads
 - Chemical Absorbent Socs
 - Gloves
 - Goggles
 - Haz. Mat Pulp
 - Respirator
 - Respiratory Cartridges
 - Rubber Dike

- 5 Oil Storage Spill Drum**
- Absorbent Pads
 - Absorbent Socs

- 6 Pole Barn Spill Kit**
- Absorbent Pads
 - Absorbent Socs
 - Aprons
 - Boots
 - Chemical Absorbent Pads
 - Disposable Bags
 - Drum of Lime
 - Face Shields
 - Gloves
 - Haz Mat Pulp
 - Repair Epoxy Stick
 - Respirator
 - Respirator Cartridges
 - Suits

PROACE Chemical Storage Locations



NOTES:

1. HazWaste & Scrap Pads are concrete with vinyl liners.
2. ☁ Storm Sewer Inlet.

See "CMC Chemicals" tab for chemical location, container, and maximum inventory.

See "Chemicals in Equip. Loc." tab for chemicals contained in equipment.

PROACE LAYOUT	
 	
Central Motor Wheel of America dba CMWA 125 Wheat Dr. Paris, Ky 40361	
Scale: NTS	Figure 5
Date: 08/27/2020	
Prepared by: REB	

PROACE Chemical Maximum Inventories

1 Mechanical Room						
Supplier	Chemical	Container	Max. Inventory	UoM	SPCC Storage Capacity	
Avista	RO Quest 4000	55 GTk	55	Gals.		55
BgrassKesco	50	55 GTk	55	Gals.		55
BgrassKesco	Dechlor 10	55 GTk	55	Gals.		55
BgrassKesco	KC 323M	30 GPD	30	Gals.		0
BgrassKesco	KD 110	30 GPD	30	Gals.		0
BgrassKesco	KL-615	30 GPD	30	Gals.		0
BgrassKesco	Sodium Hypochlorite	30 GPD	30	Gals.		0
Cargill	Bright & Soft Salt Pellet	2520 PP	7,560	Lbs.		0
	Hazardous Waste (outside mech.room)	55 GSD	55	Gals.		55

2 Paint Mix Room						
Supplier	Chemical	Container	Max. Inventory	UoM	SPCC Storage Capacity	
PPG	Various Solvents	55 GSD	220	Gals.		220
PPG	Various Paints	55 GSD	550	Gals.		550
Tiger	Drylac 200	250 Lb. FD	3,750	Lbs.		0
	HazWaste	55 GSD	55	Gals.		55

3 PROACE Pretreatment						
Supplier	Chemical	Container	Max. Inventory	UoM	SPCC Storage Capacity	
Dubois	Liquid Caustic Soda 25%	55 GPD	55	Gals.		55
Henkel	Boneerite M-AD 700	55 GPD	55	Gals.		55
Henkel	PaleCoat 4610 R2	55 GPD	55	Gals.		55
Henkel	Prepalene 5552A	55 GPD	55	Gals.		55
Henkel	Prepalene 5552B	55 GPD	55	Gals.		55
Henkel	Ridoline 412	330 GT	330	Gals.		330

4 Vacuum Room						
Supplier	Chemical	Container	Max. Inventory	UoM	SPCC Storage Capacity	
Dubois	Dubois OH-25 (Liquid Caustic Soda 25%)	55 GPD	55	Gals.		55

5 Henry Filters						
Supplier	Chemical	Container	Max. Inventory	UoM	SPCC Storage Capacity	
MasterChem.	Coolpak ALW (Paint)	275 GT	275	Gals.		275
MasterChem.	CB2025 (Casting & Machining)	275 GT	550	Gals.		550

6 Cooling Water Pit						
Supplier	Chemical	Container	Max. Inventory	UoM	SPCC Storage Capacity	
BgrassKesco	KC 323M	30 GPD	30	Gals.		0
BgrassKesco	KD 110	30 GPD	30	Gals.		0
BgrassKesco	Sodium Hypochlorite	30 GPD	30	Gals.		0
BgrassKesco	KL-617	5 GP	5	Gals.		0

7 Floor Cleaner Storage						
Supplier	Chemical	Container	Max. Inventory	UoM	SPCC Storage Capacity	
Lynx	D-Plus 2 Floor Cleaner	250 GTk	250	Gals.		250
Lynx	D-Plus 2 Floor Cleaner Delution Tank	110 GTk	110	Gals.		110

8 Gas Cylinder Storage						
Supplier	Chemical	Container	Max. Inventory	UoM	SPCC Storage Capacity	
Airgas	Bulk Argon supply Tanks (outside)	292.370 CFTk.	292,370	CF		0
Airgas	Compressed 75% Argon 25% nit	250 CF/CY	1,000	CF		0
Airgas	Compressed Acetylene	250 CF/CY	250	CF		0
Airgas	Compressed Argon	250 CF/CY	1,000	CF		0
Airgas	Compressed Nitrogen	250 CF/CY	500	CF		0
Airgas	Compressed NOS	250 CF/CY	250	CF		0
Airgas	Compressed Oxygen	250 CF/CY	2,000	CF		0
Airgas	Compressed Oxygen	310 Lb./CY	620	Lbs.		0

9 Machinery Lubrication Control Room						
Supplier	Chemical	Container	Max. Inventory	UoM	SPCC Storage Capacity	
Atlas Machine and Supply	AM-1046	55 GSD	110	Gals.		110
Conoco	Hyd AW 68	275 GT	275	Gals.		275
Hill & Griffith	Aquatech FR-200	55 GPD	330	Gals.		330
Houghton	Cosmoubic B-230	335 GT	335	Gals.		335
PetroCanada	220 Multi-Way Machine Lube	240 GPT	240	Gals.		240
PetroCanada	Various Lubricants	5 GP	200	Gals.		0

GRAND TOTAL SPCC STORAGE CAPACITY

4,180

Acronyms 12CYU - 12 Cylinder Unit
 CF - Cubic Foot
 CF/CY - Cubic Feet / Cylinder
 CFTk - Cubic Foot Tank
 Gals. - Gallons
 GJ - Gallon Jug
 GP - Gallon Pail
 GPD - Gallon Plastic Drum
 GSD - Gallon Steel Drum
 GSSD - Gallon Stainless Steel Drum
 GT - Gallon Tote
 GTk - Gallon Tank
 GDWTK - Gallon Double Walled Tank
 Lbs. - Pounds
 PFD - Pounds Fiber Drum
 PP - Pounds Pallet
 PPD - Pounds Plastic Drum

PROACE Equipment Chemical Locations

Henry Filters

		SPCC Storage Capacity
A	#1 Henry Filter Pit & Deck - 6,250 gals.	6250
B	#2 Henry Filter Pit & Deck - 6,250 gals.	6250
C	#3 Henry Filter Pit & Deck - 6,250 gals.	6250
D	#4 Henry Filter Pit & Deck - 6,250 gals.	6250

#1 Mechanical Room

E	1 air compressors 55 gals. oil each unit.	55
---	---	----

Generators

F	Generator #10 Double Walled Diesel Tank	878
G	Generator #11 Double Walled Diesel Tank	878
H	Generator #12 Double Walled Diesel Tank	675

Transformers

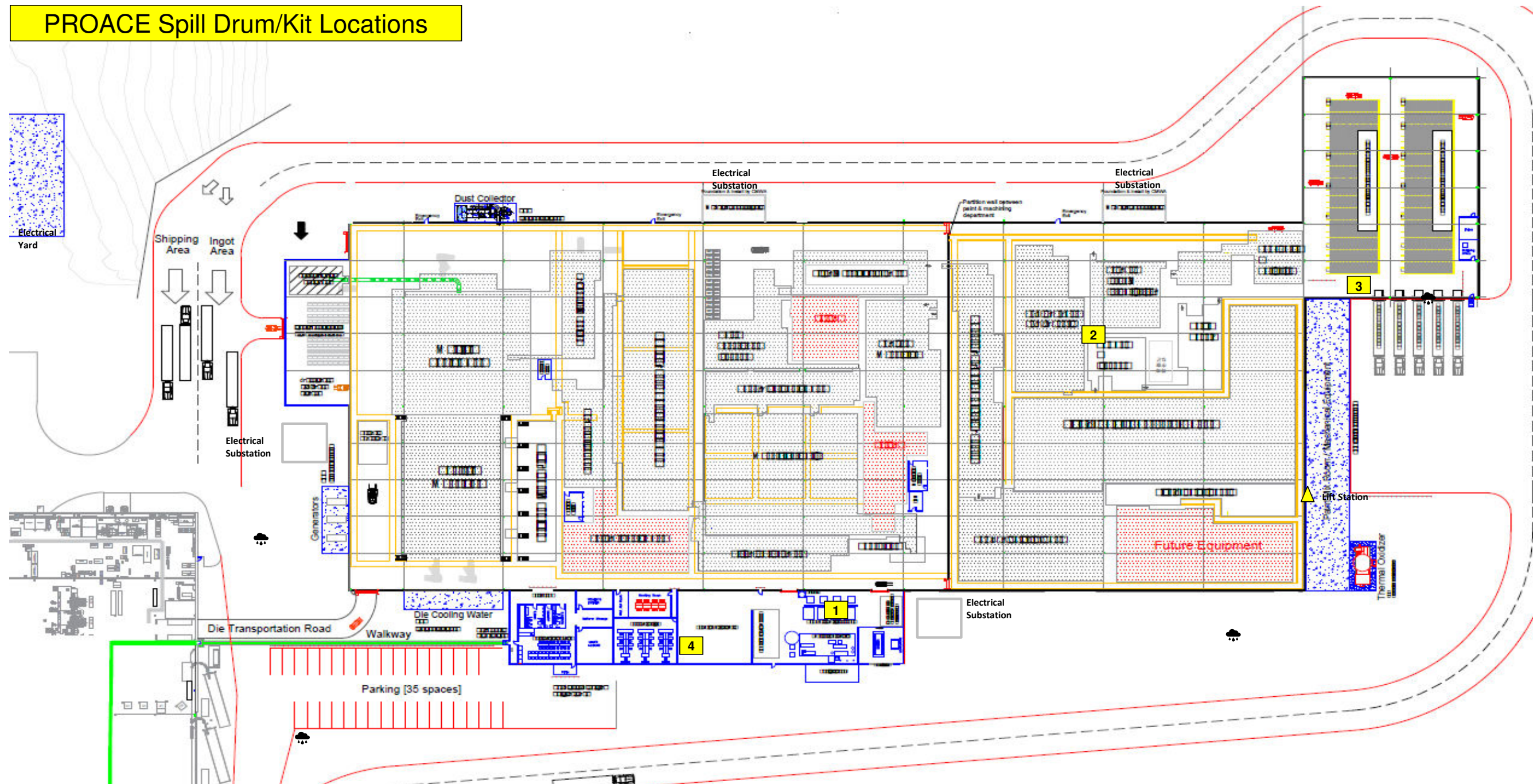
I	Pad-Mounted Transformer	1996
J	Transformer	2956

Used Coolant

K	Used Coolant 275 GT (1-Machining & 1-Casting)	550
---	---	-----

	Grand Total Chemicals in Equipment	32,988
	Grand Total Chemical Max. Inv.	4,180
	Grand Total SPCC Storage Capacity	37,168

PROACE Spill Drum/Kit Locations



Spill Kit Contents

Inventory as of ??/??/??

- 1 Mech. Room Spill Kit**
- Aprons
 - Chemical Absorbent Pads
 - Chemical Absorbent Socs
 - Disposable Bags
 - Drum of Socs
 - Face Shield
 - Goggles
 - Haz. Mat Pulp
 - Respirator
 - Respirator Cartridges
 - Shovel
 - Suits



- 2 Paint Line Spill Drum**
- 2004 Emergency Response Book
 - Absorbent Pads
 - Absorbent Pillows
 - Absorbent Socs
 - Gloves
 - Goggles
 - Suit

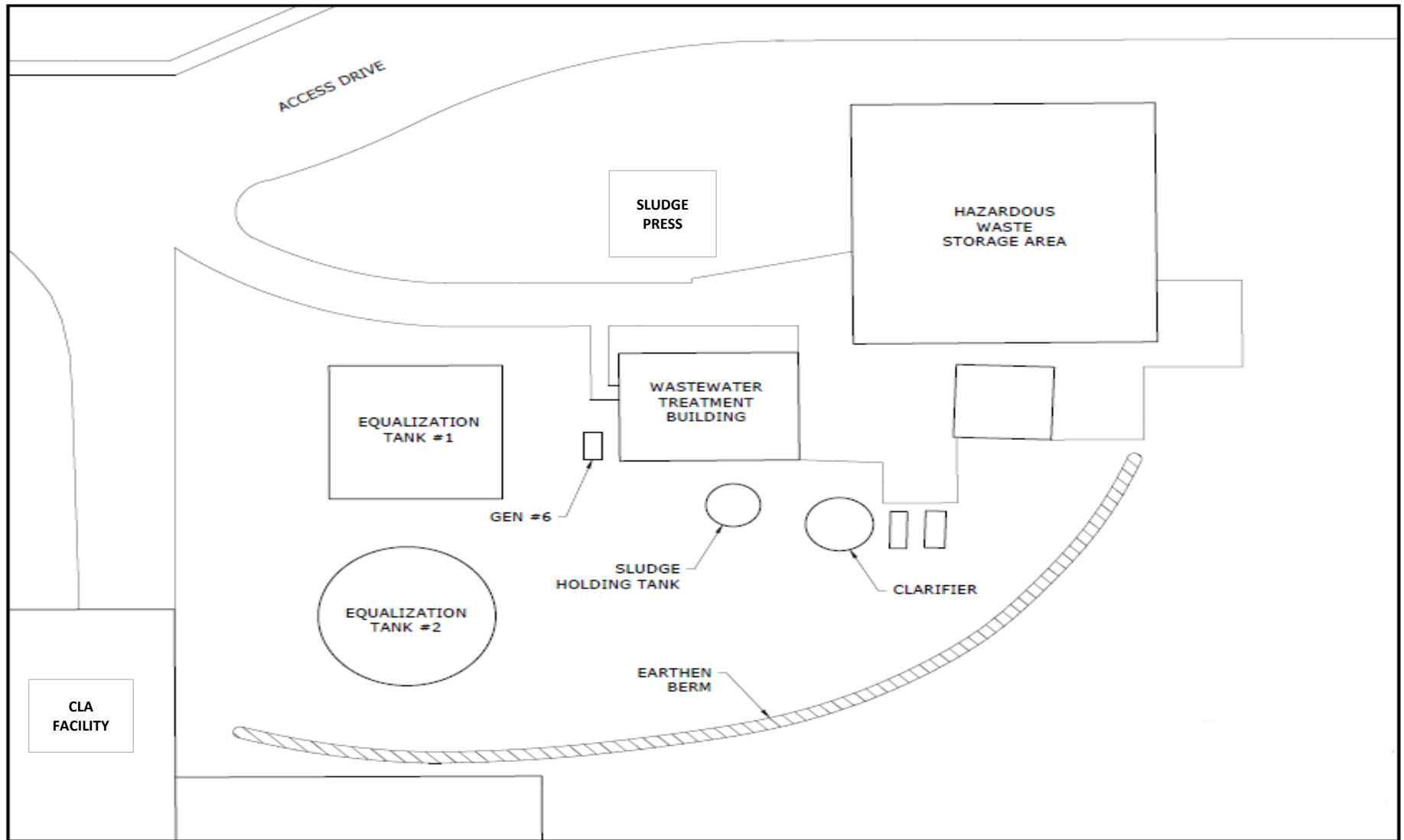
- 3 Shipping Dock Spill Kit**
- 2004 Emergency Response Book
 - Chemical Absorbent Pads
 - Chemical Absorbent Socs
 - Gloves
 - Goggles
 - Haz. Mat Pulp
 - Respirator
 - Respiratory Cartridges
 - Rubber Dike

- 4 Oil Storage Spill Drum**
- Absorbent Pads
 - Absorbent Socs

Custom Soil Resource Report
Soil Map (Central Motor Wheel of America, Inc.)

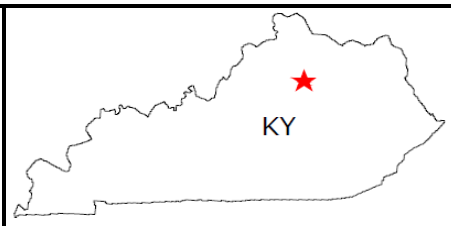



 <p>CENTRAL MOTOR WHEEL OF AMERICA dba CMWA 125 Wheat Dr. Paris, KY 40361</p>	 <p>KY</p>	<p>QUADRANGLE INFORMATION</p> <p>PARIS WEST, KY - 1954 PHOTOREVISED - 1987</p>	<p>Geology MAP CENTRAL MOTOR WHEEL of AMERICA dba CMWA 125 Wheat Drive Paris, KY 40361</p> <p>Date: 07/07/2020 Prepared by: REB</p>	<p>Figure 6</p>
--	---	--	---	---------------------



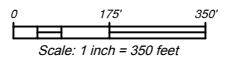
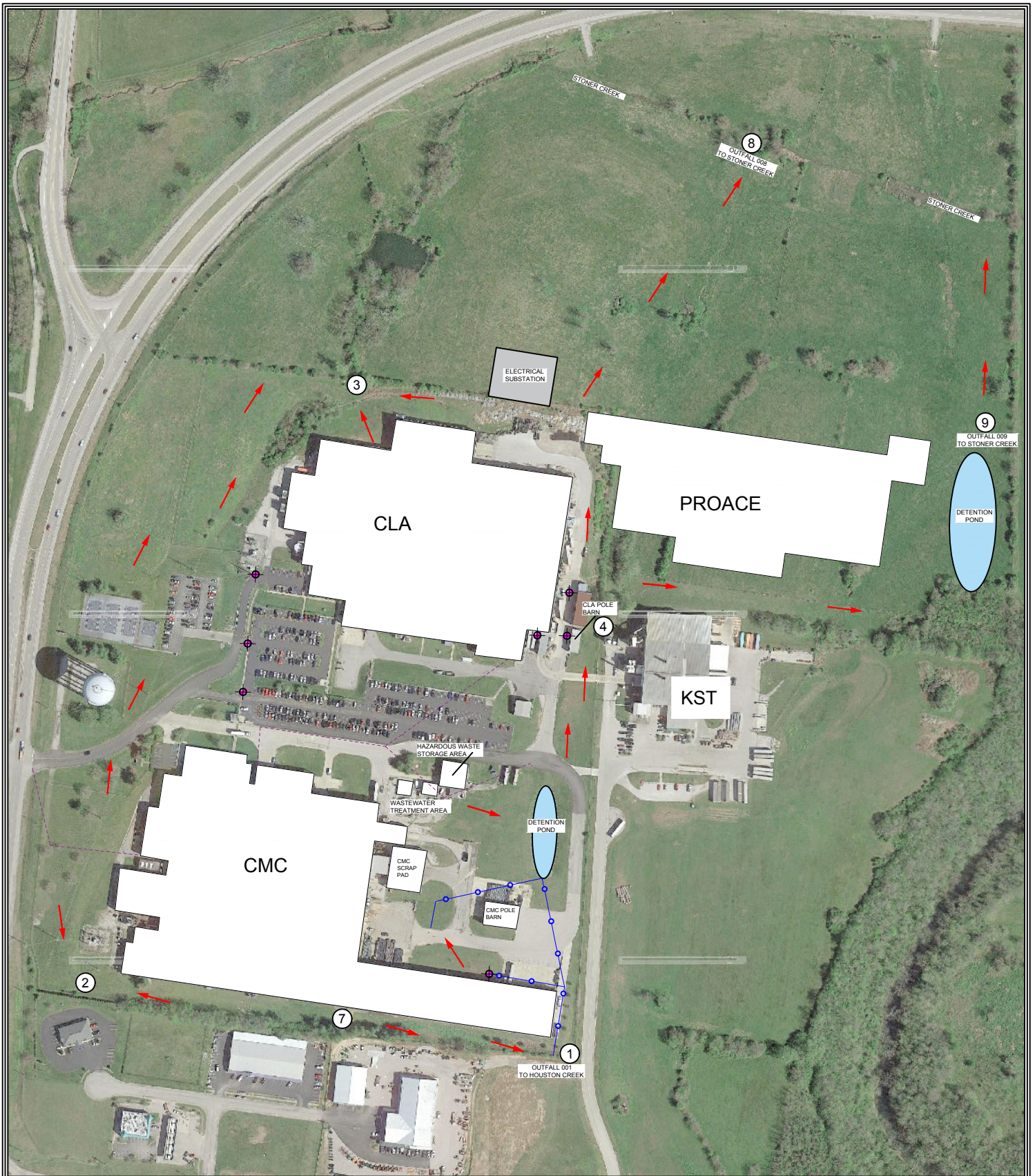


CENTRAL MOTOR WHEEL of AMERICA
 dba CMWA
 125 Wheat Dr.
 Paris, KY 40361




 QUADRANGLE
 INFORMATION
 PARIS WEST, KY - 1954
 PHOTOREVISED - 1987

WASTEWATER TREATMENT PLANT	
CENTRAL MOTOR WHEEL of AMERICA dba CMWA 125 Wheat Drive Paris, KY 40361	
Scale: 1" 2000' (Approximately)	FIGURE
Date: 07/07/2020	7
Prepared by: REB	



Cornerstone
 ENVIRONMENTAL HEALTH AND SAFETY, INC.
ISO 9001:2015 REGISTERED QUALITY SYSTEM

880 LENNOX COURT
 ZIONSVILLE, INDIANA 46077

LEGEND

	OUTFALL SAMPLING POINT
	SURFACE FLOW DIRECTION
	STORM SEWER INLET
	DRAINAGE BOUNDARY
	STORM SEWER LINE

Figure # 8 - Surface Water Flow

COMPANY: Central Motor Wheel of America, Inc.	
ADDRESS: 125 Wheat Drive	
CITY: Paris	STATE: KY
COUNTY: Bourbon	REV: 1.0
DATE: 08/31/2020	ACCT#: 4668